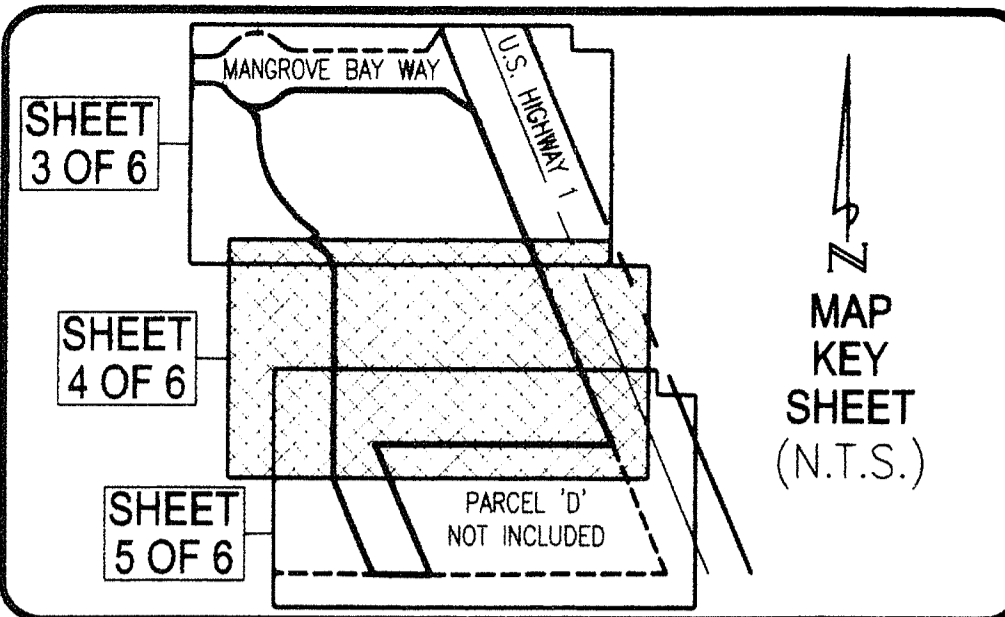


RIVERWALK POINTE AT MANGROVE BAY

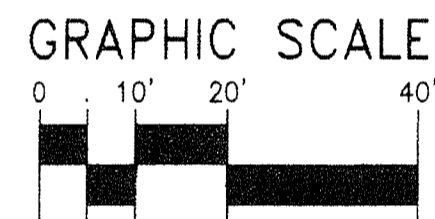
A REPLAT OF TRACTS 2, 3 AND A PORTION OF TRACT 4, MANGROVE BAY, P.U.D.,
 A PLANNED UNIT DEVELOPMENT, AS RECORDED IN PLAT BOOK 89, PAGES 46,
 PUBLIC RECORDS OF PALM BEACH COUNTY, FLORIDA,
 LYING IN SECTION 8, TOWNSHIP 41 SOUTH, RANGE 43 EAST,
 TOWN OF JUPITER, PALM BEACH COUNTY, FLORIDA
 SHEET 4 OF 6 SEPTEMBER 2014

STATE OF FLORIDA
 COUNTY OF PALM BEACH
 THIS PLAT WAS FILED
 FOR RECORD AT _____M.
 THIS DAY OF _____, 2014
 AND DULY RECORDED IN PLAT
 NO. _____ ON PAGES _____
 THRU _____
 SHARON R. BOCK
 CLERK AND COMPTROLLER
 BY _____ D.C.

146

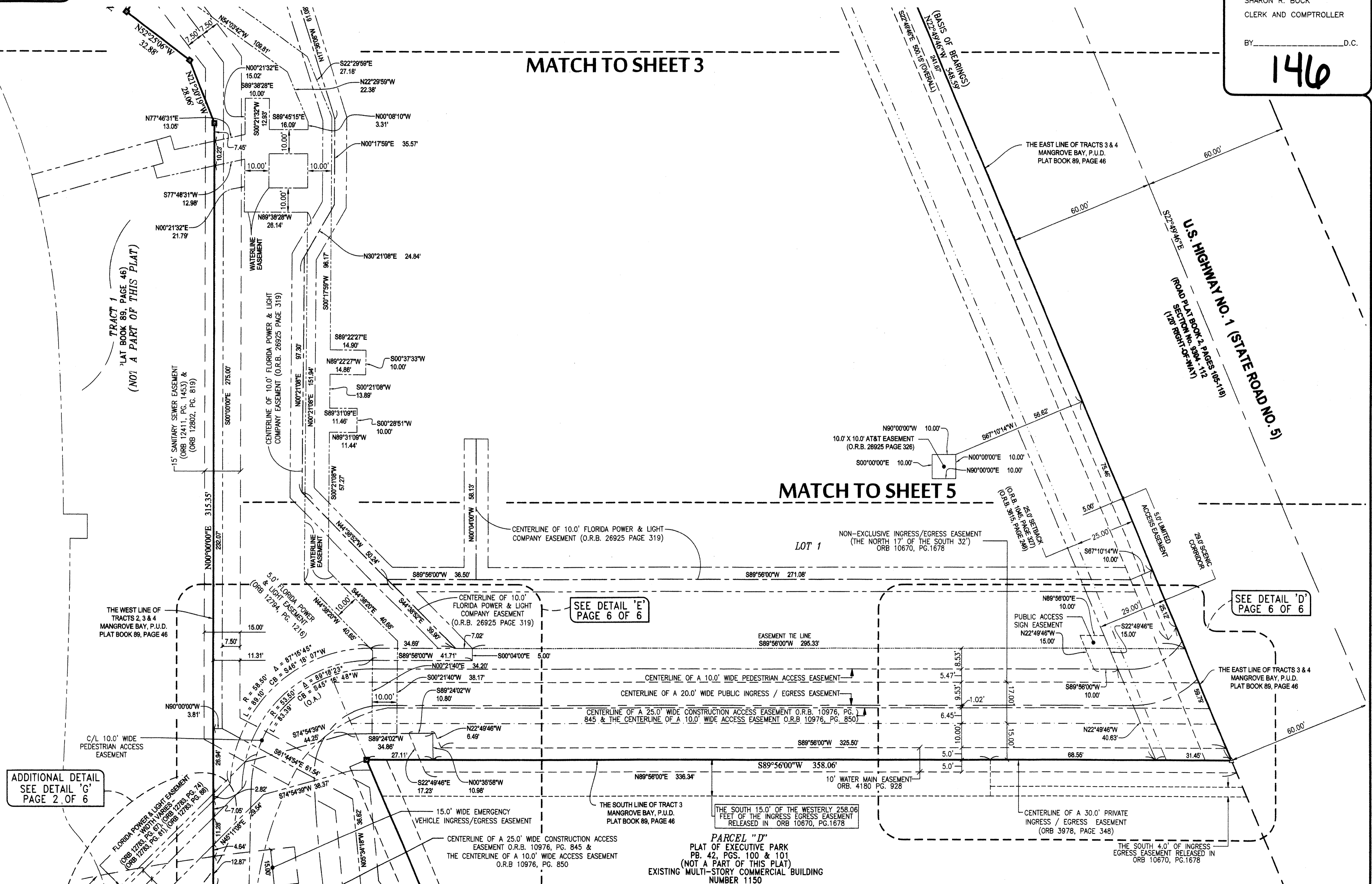


MAP KEY SHEET (N.T.S.)



MATCH TO SHEET 3

MATCH TO SHEET 5



ADDITIONAL DETAIL SEE DETAIL 'G' PAGE 2 OF 6

SEE DETAIL 'E' PAGE 6 OF 6

SEE DETAIL 'D' PAGE 6 OF 6

LEGEND OF SYMBOLS:

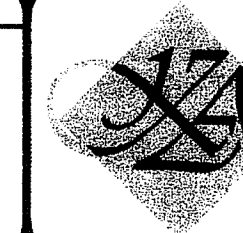
- = 4"x4" CONCRETE MONUMENT STAMPED "P.R.M. LB4897" OR AS NOTED.
- = PERMANENT REFERENCE MONUMENT
- △ = MAG NAIL & DISK STAMPED "P.R.M. LB 4897" OR AS NOTED.

PROPERTY CONTROL ABBREVIATIONS

- P.C.P. = PERMANENT CONTROL POINT
- P.R.M. = PERMANENT REFERENCE MONUMENT
- CONC. = CONCRETE
- MON. = MONUMENT
- M.N.D. = MAG NAIL & DISK

LEGEND OF ABBREVIATIONS:

- ° = DEGREES
- ' = MINUTES
- " = SECONDS
- R = RADIUS
- Δ = DELTA
- L = ARC LENGTH
- CB = CHORD BEARING
- P.C. = POINT OF CURVATURE
- P.T. = POINT OF TANGENCY
- P.R.C. = POINT OF REVERSE CURVE
- RAD. = RADIAL
- N.R. = NON-RADIAL
- T = TANGENT
- N.T. = NON-TANGENT
- C/L = CENTERLINE
- P.B. = PLAT BOOK
- D.B. = DEED BOOK
- O.R.B. = OFFICIAL RECORD BOOK
- PG. = PAGE
- P.O.C. = POINT OF COMMENCEMENT
- P.O.B. = POINT OF BEGINNING
- P.O.T. = POINT OF TERMINUS
- L.B. = LICENSED BUSINESS
- P.S.M. = PROFESSIONAL SURVEYOR & MAPPER
- L.A.E. = LIMITED ACCESS EASEMENT
- L.B.E. = LANDSCAPE BUFFER EASEMENT
- L.M.E. = LAKE MAINTENANCE EASEMENT
- S.L.E. = SANITARY SEWER LINE EASEMENT
- W.L.E. = WATER LINE EASEMENT
- E. = EASEMENT
- D.E. = DRAINAGE EASEMENT
- U.E. = UTILITY EASEMENT
- N.T.S. = NOT TO SCALE



KESHAVARZ ASSOCIATES
 Civil Engineers • Land Surveyors
 711 North Dixie Highway, Suite 201
 West Palm Beach, Florida 33401
 Tel: (561) 689-8600 Fax: (561) 689-2125

THIS INSTRUMENT WAS PREPARED BY SCOTT F. BRYSON, IN AND FOR THE OFFICES OF KESHAVARZ & ASSOCIATES, INC., LB4897, 711 NORTH DIXIE HIGHWAY SUITE 201, WEST PALM BEACH, FLORIDA 33401 TELEPHONE (561) 689-8600.

DATE: 1/02/13	CHECKED: SFB	PROJECT No.	SHEET No.
SCALE: 1" = 20'	APPROVED: SFB	11-984	4 OF 6
DRAWN: FRAB	DWG No: D11-984		